

# Shell Mysella S3 Z



- Reliable protection
- Very low ash content for two- and four-stroke engines



**DESIGNED TO MEET CHALLENGES**

Every part of your machine or process has been meticulously engineered, so you want to use a lubricant that has been designed to ensure that your equipment is well protected and works efficiently.

The Shell Mysella range of gas-engine oils has been developed to enable equipment operators to select the oil that will deliver optimum value to their operations through

- **wear protection**
- **long oil life**
- **system efficiency.**

## PERFORMANCE AT A GLANCE

	Protection	Oil life	System efficiency
Shell <b>Mysella S3 Z</b> ■ Reliable protection ■ Very low ash content for two- and four-stroke engines	✓✓✓✓	✓✓✓✓	✓✓✓✓
Shell <b>Mysella S2 Z</b> ■ Reliable protection ■ Ash free content for two-stroke engines	✓✓✓✓	✓✓✓	✓✓✓

Performance level is a relative indication only.

## A VERY LOW ASH STATIONARY-GAS-ENGINE OIL

Shell Mysella S3 Z, a very low ash gas-engine oil, is Shell's primary recommendation for operations with mixed fleets of two- and four-stroke engines that are fuelled by natural gas or low-pressure natural gas.

Shell Mysella S3 Z provides superior performance and is an excellent choice for all applications that recommend ashless and low-ash oils for the gas engines and compressors used in gas transmission, gathering, storage and power generation.

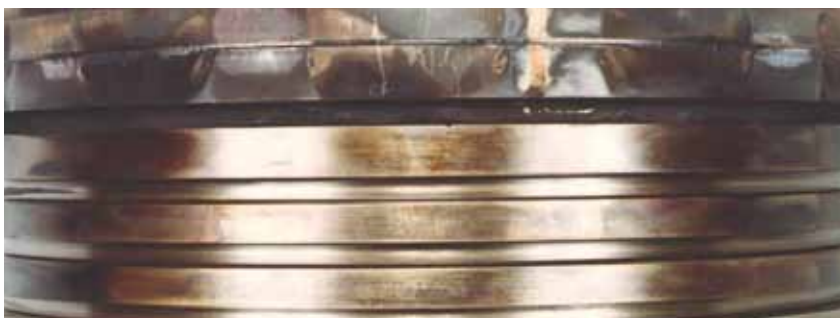
### Key data

SAE: 30, 40; BN: 2.0; ash: 0.13%



## DESIGNED TO PROTECT

The very low ash formulation of Shell Mysella S3 Z enables potentially longer spark plug life, which can extend the time between replacements. In addition, it has excellent anti-suff and anti-wear characteristics that help to protect engines, including brake mean effective pressure (BMEP) engines, during the running-in (break-in) period.



**EXCELLENT** anti-suff and anti-wear protection are demonstrated in this Cooper GWA-8 engine.

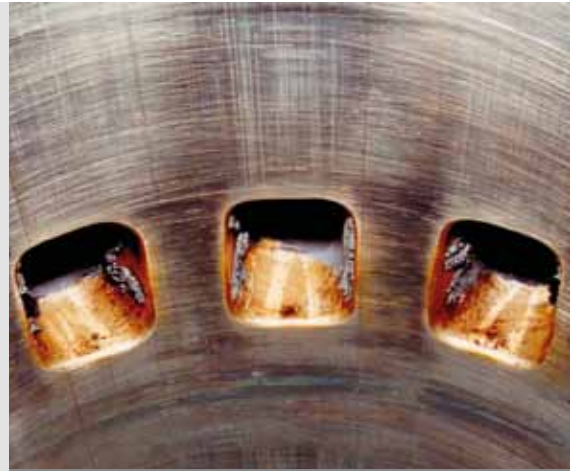
## DESIGNED FOR LONG OIL LIFE

Shell Mysella S3 Z is highly resistant to nitration and oxidation, which can lead to filter deposits, increased viscosity and acid build-up.

## DESIGNED FOR HIGH EFFICIENCY

Shell Mysella S3 Z combines a low tendency to form carbon with a strong detergency system to avoid port plugging in two-stroke (two-cycle) engines, thereby eliminating the need to clean cylinder ports between overhauls.

In addition, Shell Mysella S3 Z has a very low ash formulation that enables spark plugs to remain almost as new; their lifetime is limited only by spark gap erosion. It also virtually eliminates detonation and pre-ignition owing to the absence of deposit hot spots.



**OUTSTANDING** exhaust port cleanliness and liner condition are demonstrated in this Cooper GMVA-10 engine after 18,900 operating hours.

## SPECIFICATIONS AND APPROVALS

Shell Mysella S3 Z meets the requirements of a wide range of equipment manufacturers. SAE viscosity grades available: 30, 40.

### MEETS REQUIREMENTS

Ajax  
Allis-Chalmers  
Caterpillar (except 3400, 3500, 3600)  
Clark  
Climax  
Colt-Fairbanks Morse  
Cooper-Bessemer (two-cycle)  
Dresser-Rand (categories I, II and III)  
International-Harvester  
Minneapolis-Moline  
Waukesha  
White Superior (naturally aspirated)  
Worthington

**SHELL MYSELLA S3 Z HAS A VERY LOW ASH FORMULATION. THIS ENABLES POTENTIALLY LONGER SPARK PLUG LIFE, WHICH CAN EXTEND THE TIME BETWEEN REPLACEMENTS.**

## REAL-WORLD VALUE DELIVERY

Shell Mysella S3 Z is a very low ash natural-gas engine oil from Shell. It is suitable for a wide range of two- and four-stroke engines.

## FULL PRODUCT AND SERVICE PORTFOLIO

Whatever your needs or application, we can provide a full range of oils and greases, including synthetic, high-performance products and additional services.

## APPLICATIONS



Suitable for use in two- and four-stroke gas engines operating compressors on gas collection and gas transmission networks, and for power generation applications

For more information, please contact

Empty rectangular boxes for contact information.